









**THE USE OF THE WILD PARK—
CHANDLER PEDESTRIAN TRAIL
IS LIMITED TO THE FOLLOWING
ACTIVITIES:**

PERMITTED ACTIVITIES

- HIKING 
- CROSS-COUNTRY SKIING 
- SNOWSHOEING 
- PICNICKING 
- BIRD WATCHING 

PROHIBITED ACTIVITIES

- USE OF WHEELED VEHICLES 
- FIRES 
- CAMPING 

**TRASH: PLEASE CARRY OUT
WHAT YOU CARRY IN**

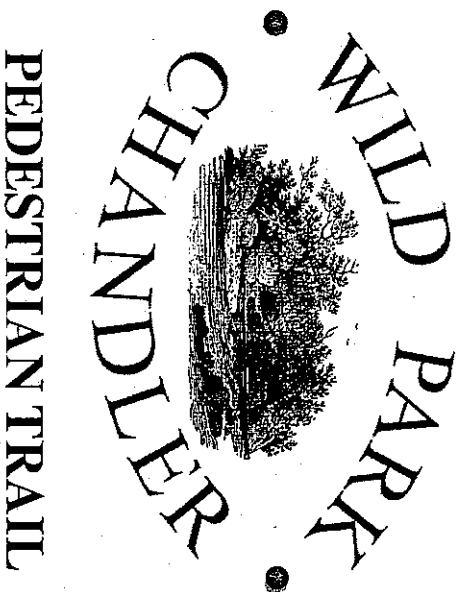
BACKGROUND—HOW THE TRAIL WAS CREATED: This walking trail and the surrounding 183 acres of conservation land has been made possible by the generosity of the Chandler family and Cecily Crowe Bentley.

In 1990, Cecily Bentley donated a conservation easement on 52 acres on the south side of Twenty-mile Brook. The value of this easement, plus private and town funds, enabled the town to contribute the 40 percent necessary to participate in the state's Land Conservation Investment Program and purchase, in 1990, the 33-acre Parkhurst Parcel, which is now the Wild Park.

In 1995, the Chandler family granted a conservation easement on 100 acres adjacent to the park and permitted public pedestrian access along a specifically designated trail which now connects the park and the Chandler property.

The Town of Tuftonboro is much indebted to these far-sighted conservationists who have made this recreational resource possible. The town is also indebted to the volunteers who, under the leadership of the Tuftonboro Conservation Commission, cleared the trail.

FOR MORE INFORMATION about future educational programs and tours, contact the Tuftonboro Conservation Commission. (Kris Kenison, 569-9988 or Ann Hackl 569-3930).

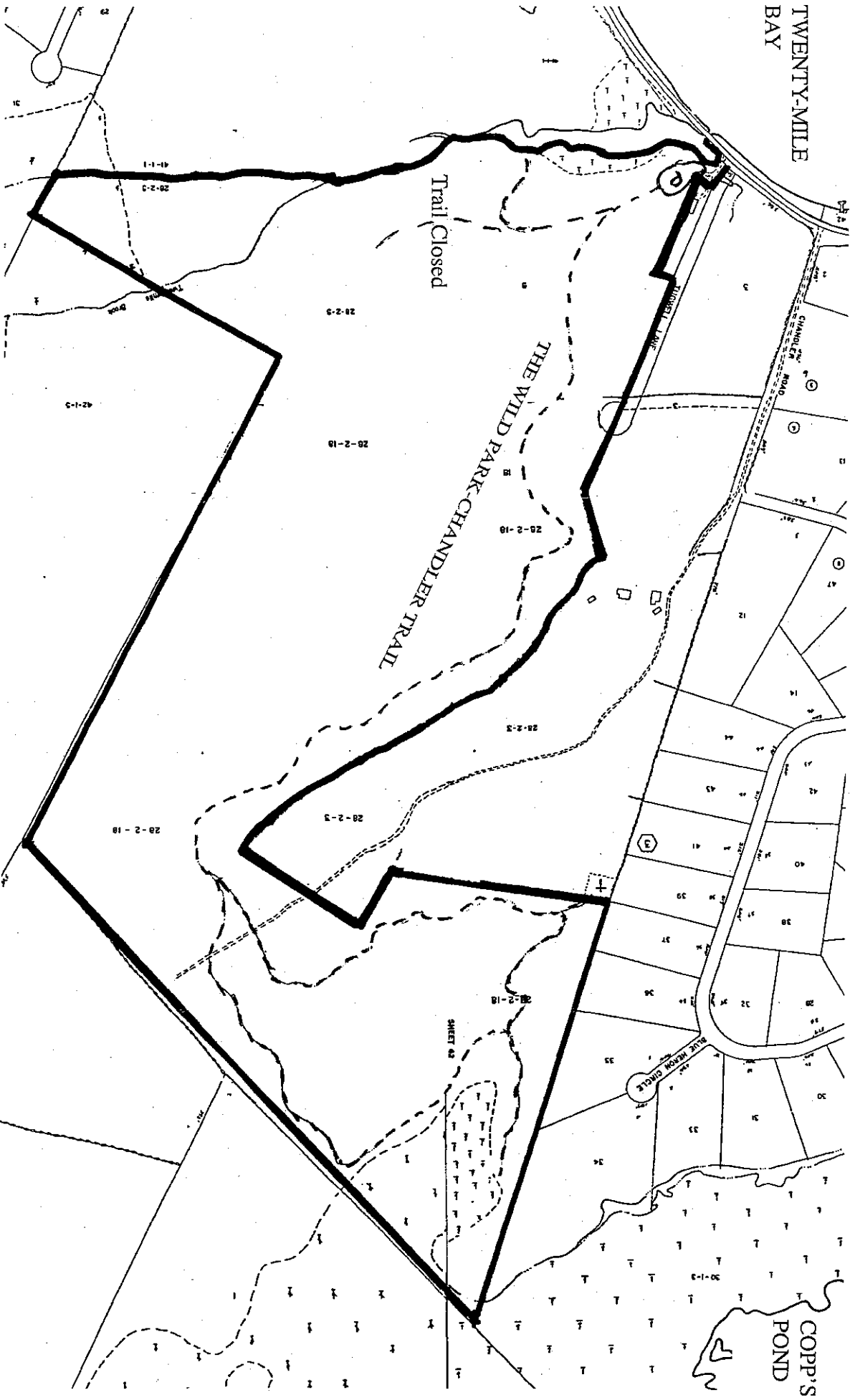


VISITORS HOURS
1/2 Hour before Sunrise
to 1/2 Hour after Sunset

TRAIL LENGTH
Approximately Two Miles Round Trip

DIRECTIONS
The trail begins at the Wild Park parking lot, located off Route 109 directly across from 20-Mile Bay, just south of Chandler Road.

THE WILD PARK - CHANDLER PEDESTRIAN TRAIL



The trail begins at the parking lot of the Wild Park and soon passes onto the Chandler property. After a walk of .6 mile, the trail will fork to create a big loop. The right-hand fork, after about .4 mile, will meet on the right side trail from which one can overlook Copp's Pond. Returning from this detour, the main trail proceeds another .1 mile to another short trail which visits the Chandler graveyard. After the main trail is regained, it is another .2 mile to complete the loop section and rejoin, by a turn to the right, the initial .6-mile section of the trail. The total trail distance is estimated to be 1.9 miles and should take slightly more than an hour to walk.