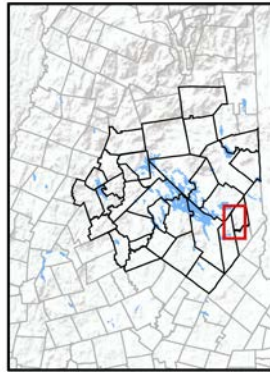


COPPLE CROWN CONSERVATION AREA
Conserved Property of the
Lakes Region Conservation Trust

Welcome to the Copples Crown Conservation Area, a 732-acre property acquired by the Lakes Region Conservation Trust in 1996. Copples Crown Mountain (elev. 1,868 feet) is a major landmark southeast of Lake Winnepesaukee, and the view from the summit offers spectacular and unique perspectives of the Lakes Region and eastern New Hampshire.

From the main summit, the prominent landmarks are Lake Winnepesaukee and Lake Wentworth in the near distance. Beyond them rise Mount Major and the Belknap Range to the west and the Ossipee and Sandwich Ranges to the north. On clear days, the higher peaks of the White Mountains are visible. A trail to the eastern summit of Copples Crown rewards the hiker with views of Moose Mountain and a broad vista towards the New Hampshire Seacoast.



Copples Crown Trail

see map on reverse—unshaded area is Copples Crown Conservation Area

Ascent (read down)		Descent (read up)	
0.0 mi			2.6 mi
0.2 mi	L onto	– Woodman Hill Rd –	R off
1.2 mi	bear R at	– road junction –	straight at
1.2+mi	L at	– LRCT kiosk –	R at
	begin	– blue blazes –	end
2.0 mi	R at 1 st	– switchback –	L at 7th
2.5 mi	L	– trail to East Peak 0.2 mi –	R
2.5+mi	L	– trail to outlook –	R
2.6 mi		Copples Crown, main summit, view	0.0 mi

Directions to Copples Crown Conservation Area:

- From Wolfeboro, follow NH Rt. 28 ~ 3 mi. east to NH Route 109.
- Turn right on Route 109 and continue ~ 7.9 mi. to Governor's Rd. in Brookfield.
- Turn right on Governor's Rd. and proceed 0.4 mi. to Moose Mtn. Rd.
- Turn right on Moose Mtn. Rd. The pavement ends in 1.5 mi.; bear left along a narrow dirt road to a parking area. The trail begins on a wood road heading north.

Note: Access is via Brookfield, not through the Copples Crown Village District in New Durham. Please respect the private property of our neighbors. Thank you.

Lakes Region Conservation Trust

The Lakes Region Conservation Trust was founded in 1979 to conserve the natural heritage of New Hampshire's Lakes Region. Our conservation and stewardship work preserves community character, conserves critical wildlife habitat and diverse ecosystems, protects natural landmarks and scenic landscapes, and provides outdoor recreation opportunities for people of all ages.

Together with our dedicated community of supporters, we have conserved more than 130 properties totaling nearly 24,000 acres. These conserved lands encompass many of the special places that define this unique and spectacular part of New England, affording everyone abundant opportunities to explore and connect with the natural world and establishing a legacy of conservation for future generations.

Become a Member Today!



Lakes Region Conservation Trust
PO Box 766
Center Harbor, NH 03226
603-253-3301 • lrct@lrct.org
www.lrct.org

COPPLE CROWN
TRAIL MAP

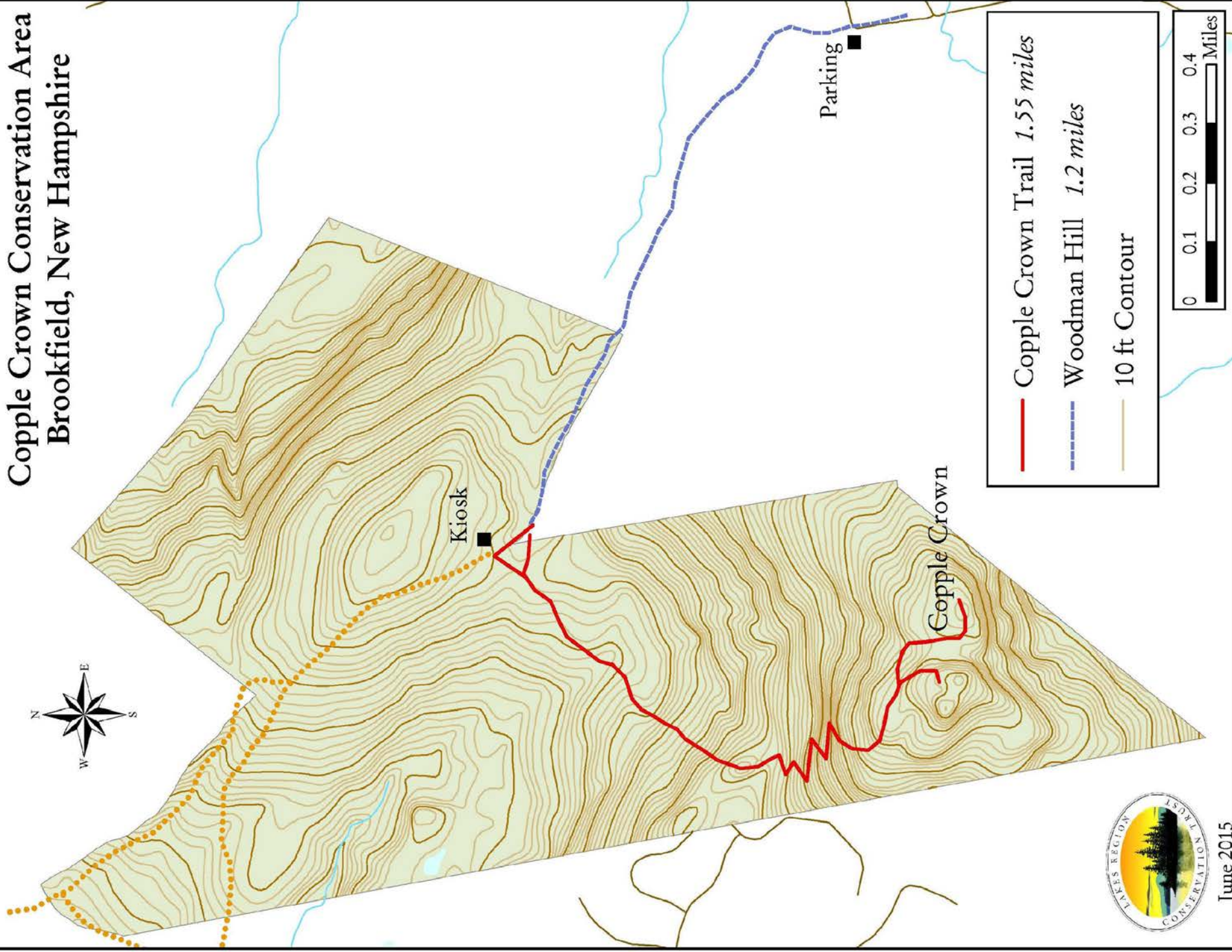
LAKES REGION CONSERVATION TRUST



COPPLE CROWN CONSERVATION AREA
BROOKFIELD, NEW HAMPSHIRE



Copple Crown Conservation Area Brookfield, New Hampshire



June 2015